

LAVINA® V-25 Vacuum

Operating Manual

V-25-115 (115 Volt) and V-25-230 (230 Volt)



Part of a complete system of LAVINA® vacuums and pre-separators.

Superabrasive, Inc - Home Office
9411 Jackson Trail Road, Hoschton, GA 30548, USA
Ph +1 (706) 658-1122 | Fax +1 (706) 658-0357

www.superabrasive.com | info@superabrasive.us
facebook.com/superabrasive | twitter.com/superabrasive
LAVINA® User's Group: linkedin.com/company/superabrasive-inc.

 **SUPERABRASIVE**



Table of Contents

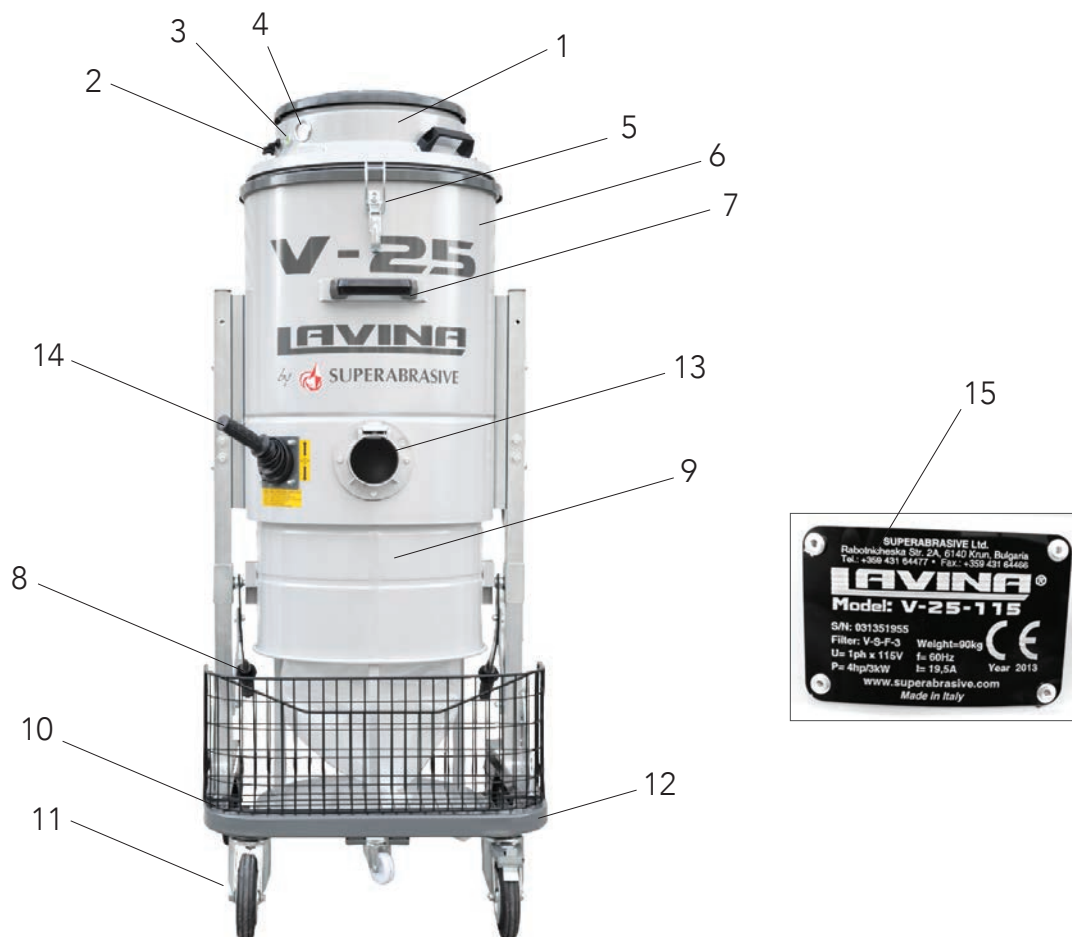
Main Components and Controls	3
Technical Data	4
Included, Replacement, and Optional Parts / Accessories	4
Safety Precautions	5
Operation	7
Waste Container Removal (Emptying the Dust)	7
Filter Shaking System	7
Replacing the Air Filters	8
Installing the HEPA Filter	9
Longopac® Replacement (Changing Bags)	10
Installing Longopac® Refill Packs	11
Maintenance	12
Troubleshooting	12
Recommended Spare Parts	13
Complete Parts List and Exploded Drawings	14
Electrical Diagrams	20
Warranty and Returns	21
Handling, Transportation, and Storage	22
CE Certification	22
Disposal	22
Manufacturer Contact Information	22

Contact Superabrasive:

Technical Support: (800) 987-8403 | www.superabrasive.com | info@superabrasive.us

MAIN COMPONENTS AND CONTROLS

- | | | | |
|----|--|-----|-----------------------------------|
| 1) | Motor head assembly (3 motors) | 9) | Removable waste container |
| 2) | Power switches (3 total) | 10) | Caster wheel (2 total: 1 locking) |
| 3) | Power light | 11) | Fixed wheel (2 total) |
| 4) | Vacuum gauge | 12) | Trolley frame |
| 5) | Latches (3 total) | 13) | Vacuum suction inlet |
| 6) | Filter chamber | 14) | Filter Shaking Lever |
| 7) | Vacuum push/pull handle (front/rear) | 15) | Dust Collector information plate |
| 8) | Waste container release handle (2 total) | | |



Contact Superabrasive:

Technical Support: (800) 987-8403 | www.superabrasive.com | info@superabrasive.us

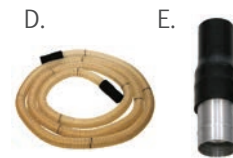
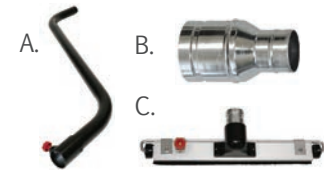
TECHNICAL DATA

	V-25-115	V-25-230
Voltage	1 ph x 115 V	1 ph x 230 V
Amperage	19.5 Amps	15 Amps
Power	4 HP / 3 kW	4.6 HP / 3.45 kW
Motor	3 bypass motors	3 bypass motors
Filter	1 bag	1 bag
Filter Surface	32 ft ² / 3 m ²	32 ft ² / 3 m ²
Filter Cleaning	handle	handle
CFM	321 CFM	321 CFM
Water Lift	100 inch / 254 cm	100 inch / 254 cm
Longopac®	yes	yes
Vac Hose Port	M88	M88
Cable Length	31 ft / 9.4 m	31 ft / 9.4 m
Weight	199 lbs / 90 kg	199 lbs / 90 kg



INCLUDED, REPLACEMENT, AND OPTIONAL PARTS

	Part Number	Description
Included:	V-A-50	(A) Aluminum Floor Wand (M50)
	V-S-C-3	(B) Steel Hose Connector (M60 to M88) Hose to Vacuum
	V-FB-50	(C) Dry Floor Brush (M50)
	V-H-P-8	(D) Polyurethane Anti-static Hose, 2 Rubber Cuffs (F60), 8 Meters (M60)
	V-SR-C-1	(E) Steel / Rubber Connector (M60 to F50), 2 Pieces
Optional Parts:	V-S-F-3	(F) Air Filter Bag
	V-S-H-3	(G) HEPA Filter



Contact Superabrasive:

Technical Support: (800) 987-8403 | www.superabrasive.com | info@superabrasive.us

SAFETY PRECAUTIONS

RECOMMENDED USE

The LAVINA® V-20 Vacuum is designed and manufactured for use with concrete, terrazzo and natural stone floors. It is recommended for use with LAVINA® machines. This vacuum is rated for dry use only, and with a machine of appropriate size. For more information, please contact Superabrasive.

PROHIBITED USE

The vacuum MUST NOT be used:

- For applications different from those stated in this manual
- For not-suitable materials (asbestos or other toxic materials)
- In environments which (1) Possess the risk of explosion, (2) Possess high concentration of powders or oil substances in the air, (3) Possess the risk of fire, (4) Feature inclement conditions, (5) Possess electromagnetic radiation
- The vacuum should be not connected to electrical power when performing maintenance-related tasks

PREPARATION FOR WORK

Ensure that:

- You have closed the work area, so that no person unfamiliar with operating the vacuum can enter the area
- The vacuum is not missing parts
- The vacuum is in an upright, working position
- All protection devices are working properly
- The electrical cable is free to move and follow the vacuum easily. In order to keep the electrical cable from being damaged, no vehicle should enter the area where electrical cables are present.

ARREST FUNCTIONS

Functions for arresting of the machine include following:

- Button to stop the motor

SAFE USE

The LAVINA® V25 is designed to eliminate all potential risks associated with its use. However, accidents may occur if unskilled or uninstructed workers fail to heed the list of potential risks below:

- Position Risks due to operator's incorrect working position
- Tangling Risks due to wearing inappropriate working clothes
- Training Risks due to lack of operational training

NOTE: Machine operators should follow the instructions in the manual at all times.

RESIDUAL RISKS

During normal operating and maintenance cycles, the operator is exposed to some residual risks, which cannot be eliminated due to the nature of machine operation.

BEFORE YOU BEGIN

- The working area must be clear from any debris or objects.
- A first-time operator must always read the manual and heed all safety instructions.
- All electric connections and cables must be inspected for potential damage.
- Ground wire system of the power supply must be also inspected.
- Perform general daily inspections of the vacuum and inspect the vacuum before each use for any sign of damage.
- Inspect all safety devices.
- The vacuum/filters must be clean and the hose should be connected.

OPERATING THE VACUUM

When operating the LAVINA® 25-L, be sure that no one else is within close proximity to the vacuum. Never leave the vacuum unattended while working. The electrical cable and hose must move freely, be damage-free, and should never run beneath the vacuum or machine. Check the floor prior to beginning any work, and ensure that it's not too uneven, which can cause damage to the vacuum.

AFTER WORK IS COMPLETED

When work is complete, clean the vacuum and its surroundings sufficiently, empty all dust / debris, unplug the vacuum and wind up the electrical cable, secure the hose, and store the vacuum in a safe and secure place.

THE WORK AREA

Ensure that the area is free of unauthorized people or vehicles, secure all cables and hoses, and always check the floor for debris.

PERSONAL PROTECTIVE EQUIPMENT (PPE)

When operating the machine, always wear safety shoes, ear protectors, safety gloves (especially when changing tools), and suitable clothing. All persons within the immediate working area must wear safety glasses with side shields.

OPERATOR

The operator must be aware of the vacuum's work environment, be properly trained prior to operating the equipment, and fully understand this manual. Only one operator may work with the machine at a single time. The operator must understand and interpret all the drawings and designs in manual, understand all sanitation and safety regulations pertaining to its operation, have floor grinding experience, know how to perform in an emergency situation, and have an adequate technical knowledge and preparation.

Contact Superabrasive:

Technical Support: (800) 987-8403 | www.superabrasive.com | info@superabrasive.us

SAFETY PRECAUTIONS, Continued

- Superabrasive cannot predict all possible circumstances that could present a potential hazard. The warnings defined in this manual should not be considered completely inclusive of all hazardous situations.
- It is the responsibility of the employer or vacuum owner to train any personnel that will be operating the vacuum unit, while complying with all local laws and regulations.
- This specific vacuum cleaner has been designed for the vacuuming and collection of dusts and solid debris. This model is not intended for any other uses or applications.
- **IMPORTANT:** Only use specified filters applicable to the operation of this vacuum cleaner.
- To ensure efficient operation of the vacuum cleaner, it must be protected from extreme environmental conditions and elements. This may include rain, snow, hail, and airborne debris.
- The vacuum cleaner should only be operated in environments with a temperature between 41°F and 113°F (5°C to 45°C) and a maximum relative humidity of 70%.
- The work environment for the vacuum cleaner should be clean, well-lit, and free of combustible elements.
- Before the vacuum cleaner is connected to the power source, ensure that the electrical voltage and frequency is correct for your specific machine model.
- The vacuum cleaner should not be operated without the proper filters installed. This could possibly result in damage to the machine, and cause harm to surrounding personnel.
- Do not open the waste container or motor head assembly while the vacuum cleaner is operating.
- Do not vacuum any flammable materials or substances such as fuels, solvents, etc. A vacuum cleaner must be specifically designed and labeled for such operation. When grinding epoxy, first ensure that the epoxy is non-toxic.
- Do not vacuum any corrosive substances unless the vacuum cleaner is specifically outfitted with containers suitable for this purpose.
- Do not vacuum any burning, smoldering, or hot materials. This could result in a possible explosion and/or damage to the vacuum components.
- If toxic or harmful substances accidentally enter the vacuum cleaner, the container and filters must be removed and cleaned immediately using the proper protective equipment and safety procedures.
- When performing any type of maintenance procedures on the vacuum cleaner, be sure that the power switches are turned off and the power cable is disconnected from the power source. Utilize the locking caster wheel to prevent movement while work is being performed.
- Make sure the power cable is free from damage while operating the vacuum cleaner. If the power cable is found to be damaged, discontinue use of the vacuum and replace the power cable immediately.
- When moving the vacuum cleaner, never pull on the power cable or vacuum hose. For this purpose, always use the designated handles mounted on the machine.
- For this specific vacuum cleaner, sound tests indicate that the emitted noise level is measured at a maximum of 76 decibels (dBA), for a distance of 1 meter from the machine (and height of 1.60 meters). The vibrations emitted from the machine have been measured at a maximum value of 2.5 m/s².
- **CAUTION:** The National Institute for Occupational Safety and Health (NIOSH) recommends that exposure to noise in the working environment be maintained below a level equivalent to 85 dBA for a period of eight hours, in order to minimize occupational, noise-induced hearing loss. Any persons working in proximity of the vacuum cleaner should wear the proper hearing protection in order to prevent hearing loss. Please refer to you local laws and regulations for further information on the matter.
- When storing the vacuum cleaner, the filter should be removed and cleaned, and the waste container should be emptied of debris. Store the vacuum cleaner in temperatures between 32°F and 104°F (0°C and 40°C). Cover the vacuum cleaner in order to protect it from accumulating debris and/or environmental elements.

Contact Superabrasive:

Technical Support: (800) 987-8403 | www.superabrasive.com | info@superabrasive.us

OPERATION

IMPORTANT: Before connecting the power cord to the power source, ensure that the electrical voltage corresponds with the requirements identified on the information plate on the vacuum cleaner.

Make sure that the flexible vacuum hose is securely attached to the vacuum pipe union and vacuum cleaner inlet. Inspect the power cable (and extension cords) for any signs of wear or damage. Replace if necessary. Toggle the motor switches to the "1" position to turn on the motors, and "0" position to turn them off.

CAUTION: Before switching the vacuum cleaner motors "on," always make ensure that they are at a complete rest before energizing. Also, before connecting the power supply, be sure the "start" switches are down.

VACUUM GAUGE

There is a vacuum gauge dial located on the front of the vacuum cleaner.



The vacuum gauge indicator must always remain in the blue zone while the vacuum cleaner is in operation.

CAUTION: If the vacuum gauge indicator remains in the red zone, even after cleaning the filter, a blockage is mostly likely present. Clean the vacuum hose and/or accessories of any blockages. Do not operate the vacuum cleaner until the clog is removed.

CAUTION: While operating the vacuum cleaner, it is important to avoid extreme twisting, rolling, or bending of the vacuum hose. This could result in damage to the vacuum motors.

WASTE CONTAINER REMOVAL (EMPTYING THE DUST)

To empty the waste, first turn off all of the vacuum motors and disconnect the power cable from the power source. Then, simultaneously lift both of the waste container release handles.



Use the attached waste container handle to move the waste container from beneath the vacuum cleaner.

IMPORTANT: When performing any work or maintenance on the waste container, a respirator should be worn in order to prevent the inhalation of airborne dust and particles.

To reinstall the waste container, perform the previous steps in reverse order.

FILTER SHAKING SYSTEM

This dust collector includes a manually operated filter cleaning (filter shaking) system. Refer to the following procedures in order to operate the filter shaking system:



- The filter shaking system should only be performed when the vacuum is turned off AND the motors have come to a complete stop. It should be also be performed before each use, and after prolonged periods of vacuum operation.
- In order to prevent tangling of the electrical cable with the lever, the electrical cable should be secured around the cable storage rack prior to operating the filter shaking system.
- Grasp the top handle with one hand in order to help stabilize the vacuum. With the other hand, rotate the filter shaking system handle in order to clean the filter.

Contact Superabrasive:

Technical Support: (800) 987-8403 | www.superabrasive.com | info@superabrasive.us

REPLACING THE AIR FILTER

To replace the vacuum filter bag, follow the procedures listed below:

IMPORTANT: All of the following procedures must be performed with the vacuum cleaner turned off and the power cable disconnected from the power source. Before performing any work or maintenance on the vacuum cleaner, be sure to wear the proper protective equipment (clothing, eye protection, and/or gloves).

- In order to prevent movement of the vacuum cleaner, place the locking caster wheel in the “stop” position. - Fig 1
- Simultaneously lift the 2 waste container release handles. - Fig 2
- Release all of the latches securing the motor head assembly. - Fig 3



Fig 1



Fig 2



Fig 3



Fig 4

- Remove the motor head assembly and place it aside on a work bench or flat area. **IMPORTANT:** The motor head assembly is heavy and requires the assistance of 2 persons for removal.
- From the underside of the filter chamber, remove the cotter pin assembly from the filter-shaking lever arm (Fig 4, 5). From the top side, remove the air filter bag. Then, cut and detach all of the filter bag ties from the bottom of the filter (5 total) (Fig 6).
- Remove the metal frame that is attached to the bottom of the air filter bag, and set aside (Fig 6).
- Pushing the filter from the bottom, turn the filter bag inside out. Cut and detach the tie on the top side of the air filter bag. Remove the metal frame from the inner side of the air filter bag and set aside (Fig 7). Completely loosen the filter ring clamp using a flathead screw driver and remove from the filter bag. **NOTE:** The new filter bag does not include a new filter ring clamp, and must be ordered separately.
- Remove the filter bag from the metal filter ring (grey piece) and discard. Thread the filter ring clamp in and around the pocket of the new filter bag, through the small slit. Install the new filter bag over the metal filter ring and tighten the filter ring clamp. Then, reinstall the metal frames on the inner and bottom sides of the new air filter bag (securing all of the tie down straps) (Fig 8).
- To reassemble the dust collector, perform the previous steps in reverse order.



Fig 5

cotter pin removed

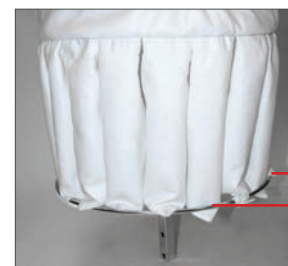


Fig 6

filter bag ties
metal frame

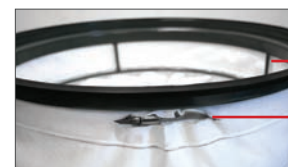


Fig 7

metal frame
thread filter ring clamp here



Fig 8

tie down straps

IMPORTANT: The used filters and debris must be disposed of using the proper methods. Please contact your local, environmental agency for information pertaining to your local laws and regulations.

Contact Superabrasive:

Technical Support: (800) 987-8403 | www.superabrasive.com | info@superabrasive.us

INSTALLING THE HEPA FILTER

To install the HEPA filter, refer to the procedure listed below (see Fig 9 for a photo of the filter):

IMPORTANT: All of the following procedures must be performed with the vacuum cleaner turned off and the power cable disconnected from the power source. Before performing any work or maintenance on the vacuum cleaner, be sure to wear the proper protective equipment (clothing, eye protection, and/or gloves).

- In order to prevent movement of the vacuum cleaner, place the locking caster wheel in the “stop” position (Fig 10).
- Release the latches that hold down the motor head (Fig 11).



Fig 9



Fig 10



Fig 11

- Remove the motor head assembly and place it aside on a work bench or flat area. **IMPORTANT:** The motor head assembly is heavy and requires the assistance of 2 persons for removal.



Fig 12



Fig 13

- Attach HEPA filter to the underside of the motor head assembly by installing the center bolt (gasket side mated to the motor head surface) (Fig 12).
- Re-mount the motor head assembly on top of the spacer ring (Fig 13).
- Secure all of the latches that hold down the motor head assembly.

Contact Superabrasive:

Technical Support: (800) 987-8403 | www.superabrasive.com | info@superabrasive.us

LONGOPAC BAG REPLACEMENT (CHANGING BAGS)

Deactivate all vacuum motors by placing the power switches in the OFF position.

IMPORTANT: Disconnect the electrical plug from the power source.

- Make sure that there is approximately 6-8 inches of an empty bag located between the bottom of the dust container and the top of the debris/waste.
- Install 2 zip ties, or cable ties, around the plastic bag: 1 located above the top of the debris/waste, and a 2nd tie located approximately 3-4 inches higher up on the bag). Both ties must be securely tightened in order to prevent the opening of the bag and possible spillage.
- Using a sharp knife or scissors, cut across the entire section of plastic bag located between the 2 zip ties, or cable ties. Remove and dispose of the bag section containing the dust and debris.
- Pull down on the bag until the end reaches the lower, bag-support plate.

IMPORTANT: When disposing of bags containing debris, be sure to use waste disposal containers and methods that fully comply with all environmental laws and regulations that are applicable to your specific country and location.



Contact Superabrasive:

Technical Support: (800) 987-8403 | www.superabrasive.com | info@superabrasive.us

INSTALLING LONGOPAC® REFILL PACKS

When the plastic bag cartridge has reached the end, the plastic bag refill may be installed using the following procedures:

- Locate the 2 retaining levers located underneath the Longopac® bag support ring (Fig 14).
- First pull down on the retaining levers, then rotate them 180 degrees so that the ends are pointing towards the center of the machine (Fig 15).



Fig 14



Fig 15



Fig 16

- Pull down on the bag support ring to remove, and place aside on a level surface.
- Place the Longopac® bag refill into the support ring. Ensure that the 2 ends of the refill are directed in an upwards position. Pull the inner end of bag refill down over the inside surface of the bag support ring (Fig 16).



Fig 17



Fig 18



Fig 19

- Lift the bag support ring into place so that the bottom is located above the bottom edge of the hopper container (Fig 17).
- Rotate the 2 retaining levers 180 degrees so that the ends are pointing outward and holding the bag support ring in place (Fig 18).
- Pull the outer edge of the bag down over the support ring until a zip tie, or cable tie, can be installed all the way around the bag.
- After the zip tie has been securely installed, pull the bag down until the end reaches the lower, bag-support plate. The vacuum cleaner is now ready for operation (Fig 19).

Contact Superabrasive:

Technical Support: (800) 987-8403 | www.superabrasive.com | info@superabrasive.us

MAINTENANCE

IMPORTANT: All of the following procedures must be performed with the vacuum cleaner turned off and the power cable disconnected from the power source. Before performing any work or maintenance on the vacuum cleaner, be sure to wear the proper protective equipment (clothing, eye protection, and/or gloves).

- In order to ensure safe and efficient operation of the vacuum cleaner, the following procedures should be performed periodically (depending on the frequency of operation):
- Remove and inspect the filters for any signs of excessive wear or damage. Replace as necessary. (See section on “Filter Removal”).
- Ensure that the sealing gaskets on the motor head assembly, filters or assemblies, and waste container are free of excessive wear or damage. Replace as necessary.
- Inspect all electrical components (switches, plugs, cables, etc.) for damage or exposed wiring. Replace as necessary.
- Ensure that all screws, bolts, and nuts are properly tightened.
- Check the waste container level. Always clean and empty the container when the debris reaches a maximum of 75% of its full capacity.
- Check the flexible vacuum hose and accessories for significant wear or damage. If holes are present, the vacuum cleaner’s efficiency will be reduced, and debris will leak into the work environment.

IMPORTANT: All major repair work should be performed by Superabrasive or an authorized repair facility.

VACUUM MOTOR SERVICING

During the life of the vacuum motor, the carbon brushes inside the motor may be replaced once. These brushes are considered to be a ‘wear part’ and their replacement is not covered under the vacuum warranty. For additional information, please contact Superabrasive, or an authorized service facility.

TROUBLESHOOTING

Vacuum Issue or Symptom	Possible Cause	Corrective Action
The vacuum fails to start or operate.	There is insufficient power being supplied to the vacuum.	Check the electrical cable, plug, and connections for possible damage.
	The electrical circuit breaker or GFI (Ground Fault Interrupter) has tripped.	Reset the circuit breaker or GFI device(s).
Dust is leaking from the vacuum during operation.	There are holes or cracks present in the vacuum hose or tools.	Check the vacuum hose and tools for holes or cracks. Replace if necessary.
	There are holes present in the filter(s).	Remove the filter(s) from the vacuum and inspect for holes or tears. Replace if necessary.
	The vacuum seals are misaligned or damaged.	Make sure all rubber and foam seals are installed and aligned properly. Replace if any visible damage is present.
The vacuum does not operate efficiently, or has weak suction power.	The vacuum hose has an obstruction or holes present.	Check the hose for obstructions and clear them as necessary. Replace the hose if visible holes are present.
	The vacuum dust container/bag is full.	Empty the container, or replace the Longopac® section of bag filled with dust and debris.
	The vacuum filter(s) has excessive blockage.	Activate the filter shaker lever to clean the filter (while the vacuum is turned off). Replace if necessary.
The motor(s) are making excessive noise.	The motor(s) is damaged.	Contact Superabrasive or an authorized service facility.

Contact Superabrasive:

Technical Support: (800) 987-8403 | www.superabrasive.com | info@superabrasive.us

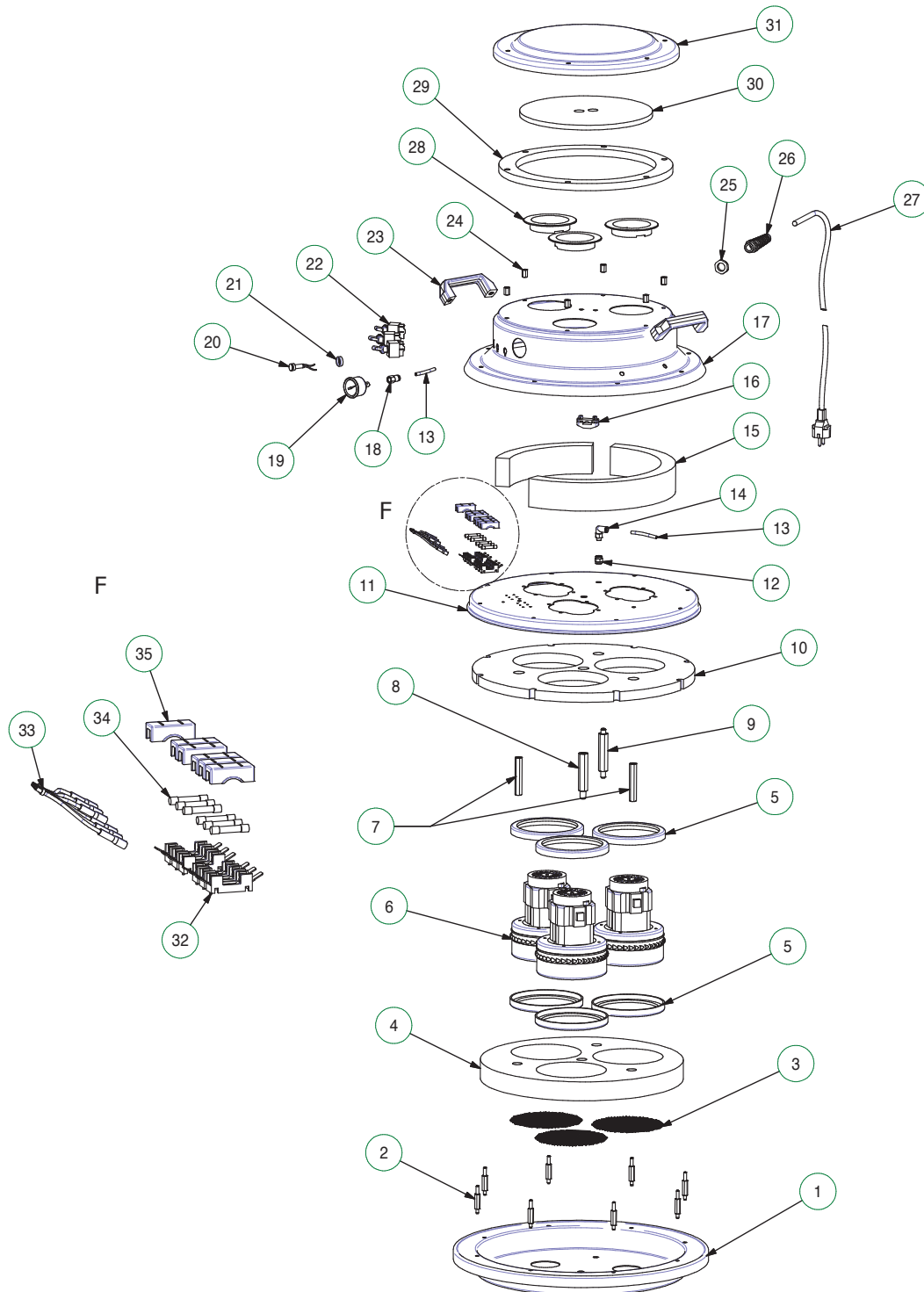
RECOMMENDED SPARE PARTS

DESCRIPTION	PART #
Air Filter Bag	V-S-F-3
HEPA Filter	V-S-H-3
Gasket, Motor Head	V-G-3
Gasket, Waste Container	V-G-4
Bypass Motor, 115 Volt, 1 kW	V-M-115
Bypass Motor, 230 Volt, 1.5 kW	V-M-230
Carbon Brush, 115 Volt	V-B-115
Carbon Brush, 230 Volt	V-B-230
On/Off Switch	V-SW-2
Fuse, 15 Amps (115V)	V-F-1
Fuse, 10 Amps (230V)	V-F-2
Latch	V-L-1
Cover for Filter Shaker Handle	V-C-H-2
Internal Deflector	V-I-D-1
Spare Longopac® (1 Refill Pack, 4 X 20 mt. bags)	V-S-L-1

Contact Superabrasive:

Technical Support: (800) 987-8403 | www.superabrasive.com | info@superabrasive.us

COMPLETE PARTS LIST:
MOTOR HEAD ASSEMBLY



Contact Superabrasive:

Technical Support: (800) 987-8403 | www.superabrasive.com | info@superabrasive.us

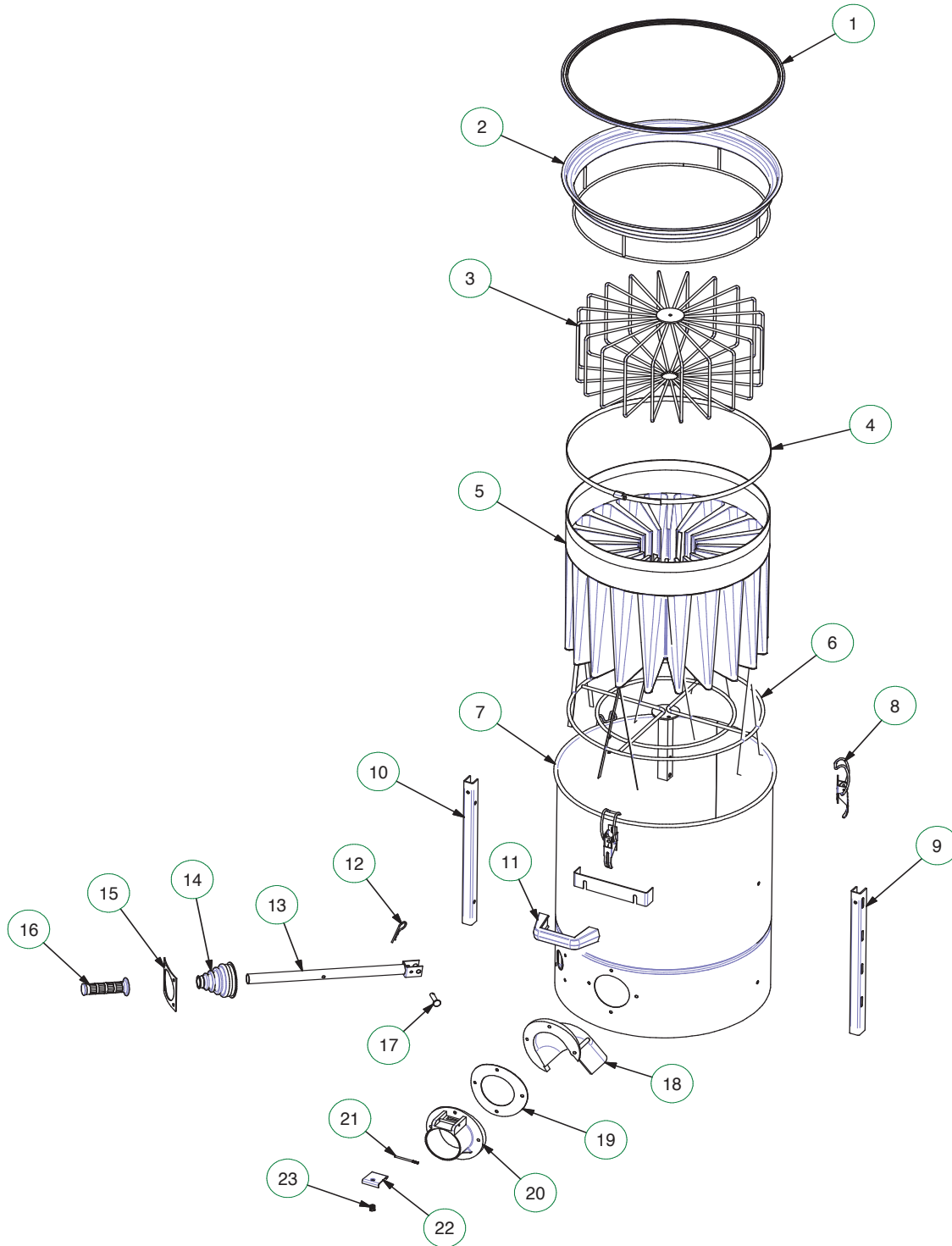
COMPLETE PARTS LIST:
MOTOR HEAD ASSEMBLY, Continued

Parts List			
POS.	QTY	PART NO	DESCRIPTION
1	1	AR3762	3 HOLES TRF BASE PLATE
2	8	AR2120	MASTER MOTOR HEAD SPACER (MOTOR FASTENER)
3	3	AR2098	ES FLANGE NET
4	1	AR2044	3 HOLES BASE PLATE NOISE BUFFERING MATERIAL
5	6	AR2252	D. 145X5 H15 MOTOR DAMPER
6	3	V-M-230	W1150 V240 50/60 Hz BP MOTOR
7	2	AR3536	SINGLE-PHASE MOTOR HEAD SPACER (M. FASTENER)
8	1	AR3537	SINGLE-PHASE MOTOR HEAD SPACER (M. FASTENER)
9	1	AR3538	SINGLE-PHASE MOTOR HEAD SPACER (M. FASTENER)
10	1	AR2042	3 HOLES MOTOR FASTENER NOISE BUFFERING MATERIAL
11	1	AR3760	3 HOLES MOTOR FASTENER
12	1	AR3533	F/F 1/8" CONNECTION
13	0,35 m	AR3898	D. 6 RILSAN PIPE
14	1	AR3342	G1/8M - D6 SWIVEL ELBOW PUSH-IN FITTING
15	0,5	AR2030	SINGLE-PHASE COVER NOISE BUFFERING MATERIAL
16	1	AR3544	SBMMM932 CABLE FASTENER SUPPORT
17	1	AR3757	SINGLE-PHASE COVER WITH 3 HOLES (MASTER)
18	1	AR3314	F 1/8 D6 STRAIGHT AIR PIPE COUPLING CONNECTION
19	1	AR3524	D. 40 MTL AIR VACUUM GAUGE
20	1	AR2025	220 V. RED LIGHT
21	1	AR5365	CHROMED NUT FOR HEAD LIGHT
22	3	V-SW-2	SINGLE-PHASE SWITCH
23	2	AR2023	HANDLE
24	6	AR4080	M6 H15xCH 10 SPACER
25	1	AR2027	PG 13,5 BLACK POLYAMIDE NUT
26	1	AR2028	PG 13.5 POLYAMIDE BLACK CABLE FASTENER
27	1	AR2029	3X2,5 16A SCHUKO POWER SUPPLY CABLE (10 mt.)
28	3	AR4085	COOLING RING
29	1	AR2393	10 PPI SP.15MM FILTER WASHER
30	1	AR2021	COVER NOISE BUFFERING MATERIAL
31	1	AR2020	SINGLE-PHASE MOTOR HEAD COVER
32	6	AR4639NT	30A 250V FUSE HOLDER
33	1	AR4181	SINGLE-PHASE 3 MOTORS HEAD WIRING KIT (MASTER)
34	6	V-F-2	10A 250V 6.3x32 FUSE
35	6	AR2501NT	FUSE BLACK COATING

Contact Superabrasive:

Technical Support: (800) 987-8403 | www.superabrasive.com | info@superabrasive.us

COMPLETE PARTS LIST:
FILTER CHAMBER ASSEMBLY



Contact Superabrasive:

Technical Support: (800) 987-8403 | www.superabrasive.com | info@superabrasive.us

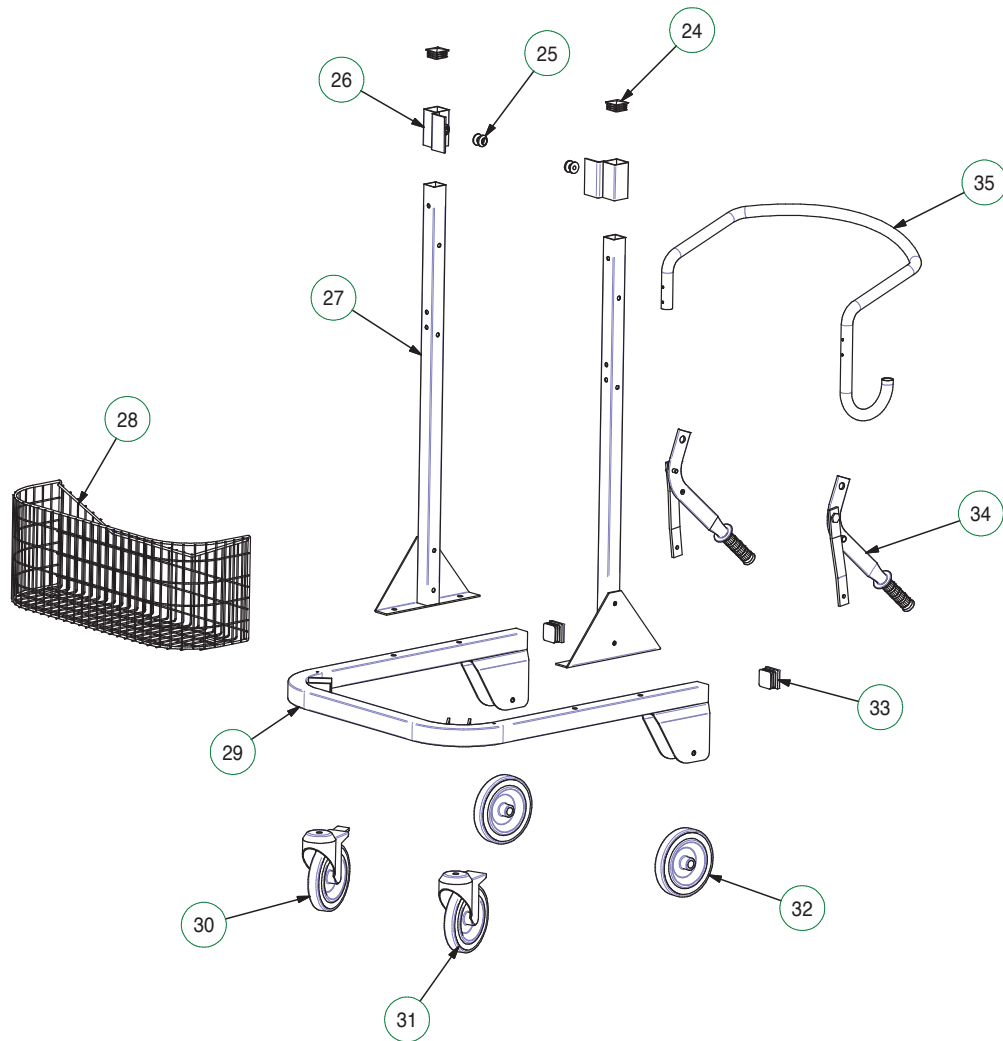
COMPLETE PARTS LIST:
FILTER CHAMBER ASSEMBLY, Continued

Parts List			
POS.	QTY	PART NO	DESCRIPTION
1	1	V-G-3	D. 500 FILTER GASKET
2	1	AR2580	D. 500 H70 FILTER HOLDER RING
3	1	AR3891	DG1/2/60 20 SPOKES FILTER TIGHTENER CAGE
4	1	AR2018	D. 500 FILTER CLAMP
5	1	V-S-F-3	D. 500 H400 20 POCKETS "G" POLYESTER FILTER
6	1	AR2457	H195 14 SPOKES FILTER SHAKER CAGE
7	1	AR2058	D. 500 H650 FILTER CHAMBER
8	3	V-L-1	SNAP FASTENING
9	1	AR2087	D. 500 CHAMBER RIGHT "U" PROFILE
10	1	AR2086	D. 500 CHAMBER LEFT "U" PROFILE
11	1	AR2001	L=140 HANDLE
12	1	AR2480	ZIG ZAG SPRING
13	1	AR2063	FILTER SHAKER LEVER
14	1	AR2066	FILTER SHAKER LEVER BELLOWS
15	1	AR2065	FILTER SHAKER FLANGE
16	1	V-C-H-2	FILTER SHAKER LEVER KNOB
17	1	AR2481	CAGE LOCK PIN
18	1	V-I-D-1	DIE-CAST DEFLECTOR
19	1	AR2414	D. 80 DIE-CAST INLET GASKET
20	1	AR2413	D. 80 DIE-CAST INLET
21	1	AR2416	DIE CAST INLET PAWL PIN
22	1	AR2418	DIE CAST INLET PAWL
23	1	AR2417	PAWL SPRING

Contact Superabrasive:

Technical Support: (800) 987-8403 | www.superabrasive.com | info@superabrasive.us

**COMPLETE PARTS LIST:
TROLLEY KIT**

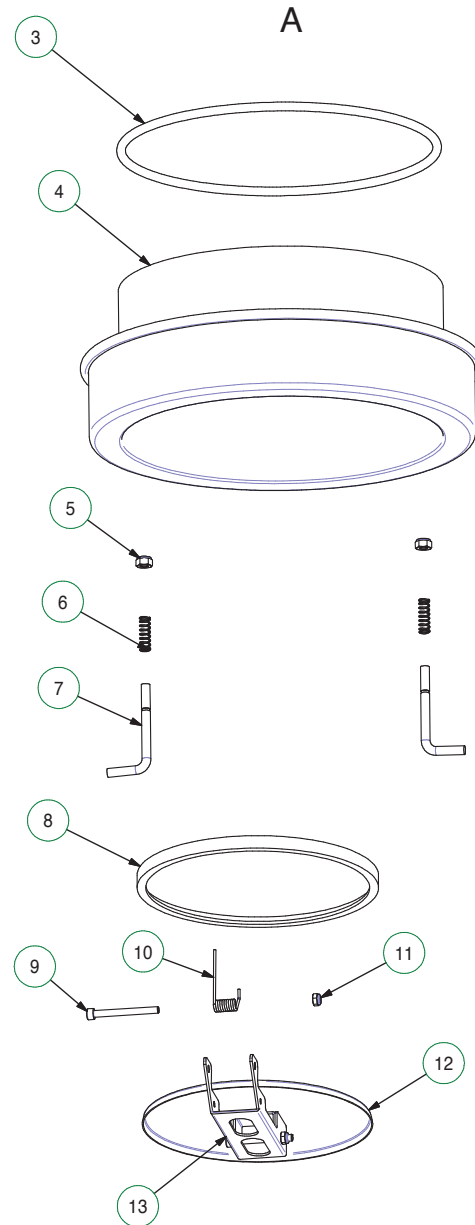
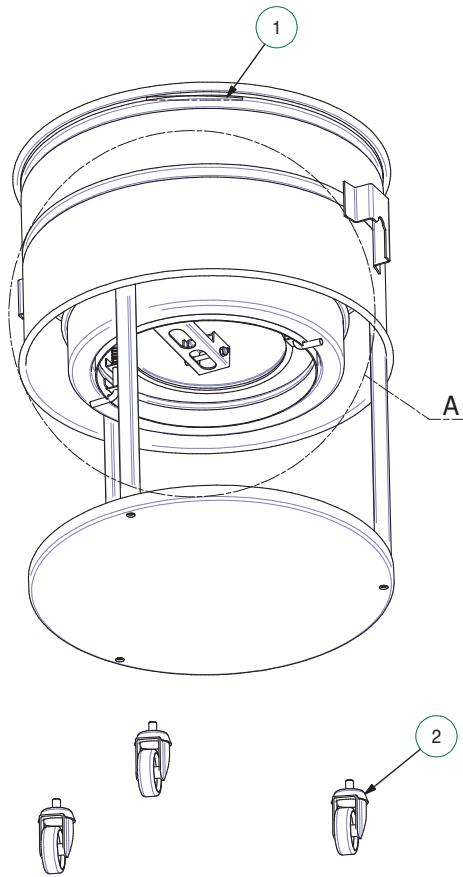


Parts List			
POS.	QTY	PART NO	DESCRIPTION
24	2	AR2051	35X35 SQUARE HEAD COVER
25	2	AR2363	FASTENING LEVER FULCRUM
26	2	AR2178	DM3 SLIDER
27	2	AR2088	DM3/ZFR75/EXP COLUMN
28	1	AR2458	DM3AIR-TRF ACCESSORIES BASKET
29	1	AR2133	DM3-ZFR75-DM3AIR TROLLEY
30	1	AR3448	D. 150 BLACK RUBBER WHEEL WITH BRAKE
31	1	AR3447	D. 150 BLACK RUBBER WHEEL
32	2	AR2118	D. 150 RUBBER WHEEL
33	2	AR2134	40X40 SQUARE HEAD COVER
34	1	-	LEVER SYSTEM
35	1	AR2132	DM3 PUSH HANDLE

Contact Superabrasive:

Technical Support: (800) 987-8403 | www.superabrasive.com | info@superabrasive.us

COMPLETE PARTS LIST:
LONGOPAC® ASSEMBLY



Parts List			
POS.	QTY	PART NO	DESCRIPTION
1	1	AR5347	Ø450 CPL HOPPER FOR LONGOPAC® DISCHARGE SYSTEM
2	3	AR2062	D. 60 NYLON CASTOR
3	1	AR5329	D8 D280 OR (LONGOPAC®)
4	1	AR5333	CONTAINER (LONGOPAC®)
5	2	Z10005	M8 LOCKNUT
6	2	AR5336	REGULATION SPRING FOR DISCHARGE FLAP (LONGOPAC®)
7	2	AR5334	CONTAINER BRACKET (LONGOPAC®)
8	1	AR5330	FLAP GASKET (LONGOPAC®)
9	1	-	M6x60 ISO 4762
10	1	AR5331	SPRING (LONGOPAC®)
11	2	-	M6 LOCKNUT
12	1	AR5335	Ø220 FLAP (LONGOPAC®)
13	1	AR5332	FLAP ARM (LONGOPAC®)iv

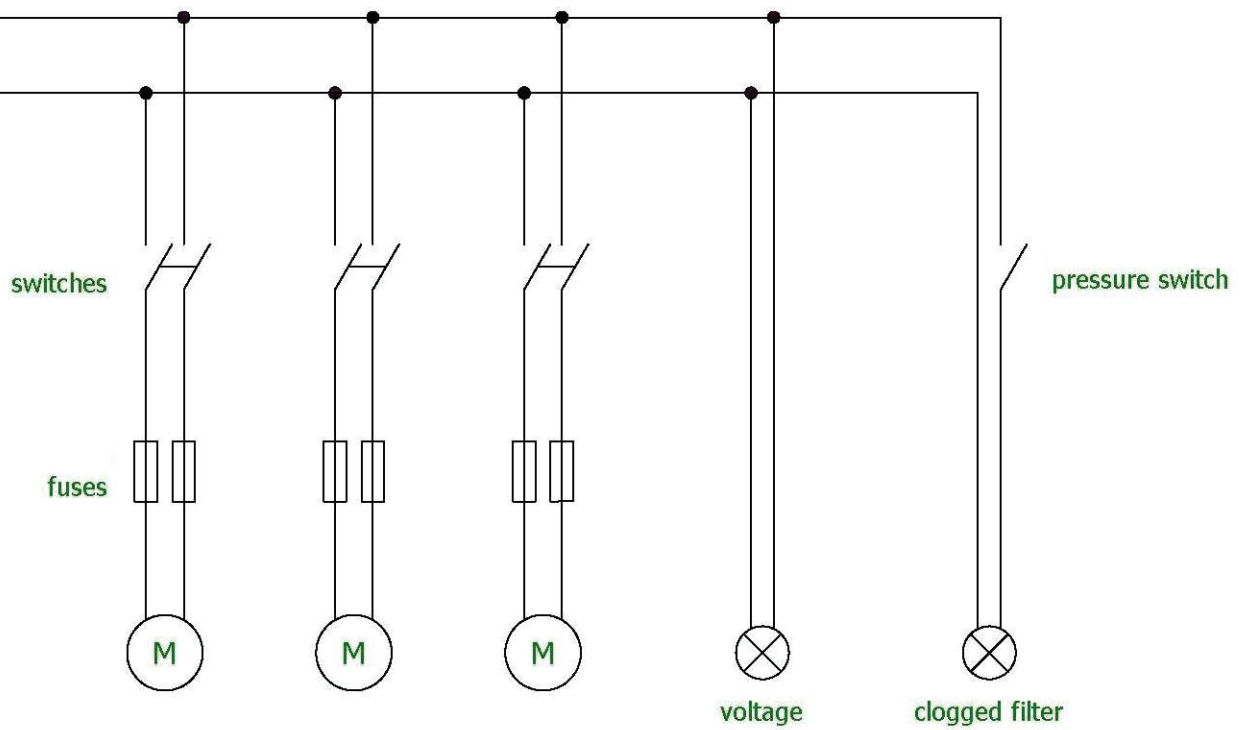
Contact Superabrasive:

Technical Support: (800) 987-8403 | www.superabrasive.com | info@superabrasive.us

ELECTRICAL DIAGRAM

ELECTRICAL WIRING DIAGRAM FOR VACUUMS WITH 3 SINGLE-PHASE MOTORS

230V-115V



Contact Superabrasive:

Technical Support: (800) 987-8403 | www.superabrasive.com | info@superabrasive.us

WARRANTY AND RETURNS

WARRANTY POLICY FOR LAVINA® V-25

If your warranty card is missing, contact your local distributor and request a warranty card, or visit us at www.superabrasive.com to download one. The customer is responsible for filling out the card and mailing it to the manufacturer's address as indicated on the card. To ensure registration and activation of warranty coverage, the warranty card must be mailed to the manufacturer within 30 days from date of purchase; failure to do so may void the warranty. Be sure to provide the manufacturer with all of the information requested, and most importantly with the distributor's name, machine serial number, and purchase date.

Superabrasive offers a guarantee on LAVINA® vacuums, covering manufacturing and material defects, for a period of 24 months from the date of purchase, as invoiced by Superabrasive. The following conditions pertain to this warranty:

- Applies only to the original owner and is not transferable.
- Vacuum must not be dismantled and tampered with in any way.
- This warranty does not cover any failures or defects caused by normal wear and tear, accidental damage, damage during transport, improper handling, repairs conducted by an unauthorized facility (without prior authorization by Superabrasive), or operation that is not in compliance with the instructions provided in this manual. Superabrasive denies all responsibility for damages or injuries, to any persons or objects, caused by improper operation of the vacuum unit.
- This warranty will become invalid in the event that equipment or accessories used on/with the vacuum unit are not supplied or approved by Superabrasive.
- Covered components proven defective will be repaired or replaced at no charge.
- This warranty does not apply to any repair of/to of proprietary parts, nor does it cover cleaning or general maintenance.
- This warranty does not apply to items with aftermarket alterations, changes, or modifications.
- This warranty is limited to repair or replacement of covered components and reasonable labor expenses.
- In the event of a warranty claim, the vacuum unit must be returned to Superabrasive, or an authorized facility, for a warranty investigation, and subsequent warranty repair or replacement.
- All warranty returns must be shipped freight prepaid.
- This warranty is in lieu of and excludes every condition of warranty not herein expressly set out and all liability for any form of consequential loss or damage is hereby expressly excluded.

The above warranty conditions may be changed only by Superabrasive. Superabrasive reserves the right to inspect and make a final decision on any machine returned under this warranty. This warranty applies to new, used, and demo machines.

Superabrasive agrees to repair or replace, free of charge, any parts which have failed due to manufacturer or material defects. Repairs must only be performed at authorized service facilities that have been approved by Superabrasive. Shipping and handling fees associated with warranty claims must be pre-paid by the customer / claimant.

In the event that a warranty investigation determines that the damage or unit failure is not attributed to manufacturer or material defects, all costs associated with the repair of the vacuum will become the direct responsibility of the claimant. If payment is not rendered for such services, Superabrasive will assume ownership of the machine and any associated parts in possession.

Superabrasive does not authorize any person or representative to make any other warranty, or to assume for us any liability in connection with the sale and operation of our products.

The manufacturer is also not liable in the event that the customer fails to submit a Warranty Certificate, fails to follow manual instructions, uses non-original spare parts, or fails to service/clean the vacuum regularly and properly

RETURN POLICY FOR LAVINA® V25

LAVINA® Vacuums may be returned, subject to the following terms:

- Vacuums may not be returned to Superabrasive Inc. for credit or repair without prior authorization. Please contact Superabrasive Inc. or your local distributor for authorization and issuance of a return authorization number. This number along with the serial number of the vacuum must be included on all packages and correspondences. Vacuums returned without prior authorization will remain property of the sender and Superabrasive Inc. will not be responsible for these.
- No vacuums will be credited after 90 days from the date of Superabrasive's invoice.
- All returns must be shipped freight prepaid. All returns may be exchanged for other equipment or parts of equal dollar value. If vacuums are not exchanged, they are subject to a fifteen percent (15%) restocking fee.

Contact Superabrasive:

Technical Support: (800) 987-8403 | www.superabrasive.com | info@superabrasive.us

HANDLING, TRANSPORTATION, AND STORAGE

When handling and transporting the machine, never use the handles or other machine parts to lift the machine. Use always a skid or pallet for transportation, and never transport an unprotected machine in the rain or snow. Always store and transport the machine in an upright position. The machine should also always be stored in a dry, frost-proof environment.

CE-CERTIFICATION

All LAVINA® dust collectors are designed to operate correctly in an electromagnetic atmosphere of industrial type, and are equipped with all of the mechanical and electrical safety protections in conformity with the following European CEE rules and regulations:

LAVINA® Vacuums comply with the Safety Directive for machines 2006/42/EC, the EMC Directive 2004/108/EC and the Low Voltage Directive 2006/95/EC.

They also comply with the norms in use UNI EN 13857, CEI EN 60204-1, CEI EN 61000-3-2, CEI EN 61000-3-3, CEI EN 55014.

Test results are a part of the machine's technical information and can be provided upon request. The vacuum unit machine is delivered with the CE mark exposed and is provided with a EC declaration of conformity.

DISPOSAL

If your vacuum is no longer operational due to its age, or needs to be replaced, please send the machine back to Superabrasive or the nearest distributor. Therefore, it can be properly disposed of while fully complying with all local, environmental laws and regulations.

MANUFACTURER CONTACT INFORMATION

If you need to contact Superabrasive Inc. with any technical support questions, or general inquiries, please contact us using the information shown below:

USA

Address: 9411 Jackson Trail Road, Hoschton, GA 30548, USA
Email: info@superabrasive.us
Telephone: (706) 658-1122
Fax: (706) 658-0357
Website: www.superabrasive.com

EUROPE

Address: Rabotnicheska 2A, 6140 Krun, Bulgaria
Email: factory@superabrasive.com
Telephone: +359 431 64477
Fax: +359 431 64466
Website: www.superabrasive.com

Contact Superabrasive:

Technical Support: (800) 987-8403 | www.superabrasive.com | info@superabrasive.us